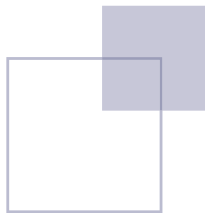


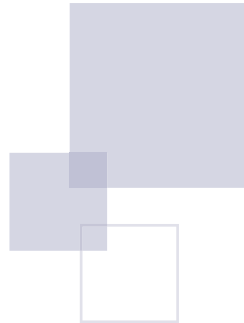
**MOVES<sup>®</sup> SLC<sup>™</sup>: Advancing EU & NATO Battlefield and Pre-Hospital Emergency Medical Care Readiness with Proven Dual-Use Capabilities<sup>1</sup>**



MOVES® SLC™: Advancing EU & NATO Battlefield and Pre-Hospital Emergency Medical Care Readiness with Proven Dual-Use Capabilities<sup>1</sup>

## Table of Contents

- 3 Strategic Environment
- 3 The Challenge
- 4 Sufficient Damage Control Resuscitation Capabilities
- 4 MOVES® SLC™: Meeting EU & NATO Requirement
- 5 Battle-proven: Ukraine's LSCO Environment
- 6 Dual-Use Capabilities: Military & Civilian Applications
- 7 Applications of MOVES® SLC™ for EU and NATO
- 11 In Summary
- 12 References



MOVES® SLC™ is a micro-integrated, mission-ready, portable life support system for complex domains, to modernize damage control resuscitation, prolonged casualty care, and evacuation.

## Strategic Environment

“Our world is contested and unpredictable. The Russian Federation’s war of aggression against Ukraine has shattered peace and gravely altered our security environment... NATO’s key purpose is to ensure our collective defence, based on a 360-degree approach.”<sup>2</sup>

“Given the changes in the strategic environment, it is important for Europe to build up sufficient deterrence capacity to prevent a potential war of aggression... However, there is a lot the EU can do to support and coordinate Member States’ efforts to strengthen the EU’s overall defence readiness, including European contributions to NATO’s deterrence and collective defence.”<sup>3</sup>

Based on NATO strategic documents, the NATO Medical Support Capstone Concept<sup>4</sup> and the NATO Medical Action Plan<sup>5</sup> have been developed. Both documents call for adapting medical capabilities and capacity to multi-domain and large-scale combat operations (LSCO), including drone warfare and hybrid threats. The NATO Medical Support Capstone Concept recommends more collaboration and interaction between civilian and military health services.<sup>6</sup> The NATO and EU doctrine states that a visible and capable medical support system demonstrates military resolve.<sup>7</sup>

## The Challenge

In parallel with disaster relief operations and other emergency scenarios, military medical units need to adapt to multi-domain and LSCO, including drone warfare. These environments can be austere, hard to reach, overwhelmed by the volume of casualties, challenged by extended holding times in poorly equipped places of opportunity, isolated by interrupted supply chains, and forced to contend with the tyranny of distance when evacuating in vehicles of opportunity—in any combination. In the face of critical trauma, bringing critical care capabilities as close as possible to the point of need can indeed mean the difference between life and loss. Agility, scalability, and rapid readiness are essential, as are mobility and precision. In these conditions, technology must be smaller, lighter, more durable, intuitive, and easy to maintain.

- **MOVES® SLC™:** Advancing EU & NATO Battlefield and Pre-Hospital Emergency Medical Care Readiness with Proven Dual-Use Capabilities<sup>1</sup>

*Military medical services must integrate timely DCR provision into their medical support plans.*

## Sufficient Damage Control Resuscitation Capabilities

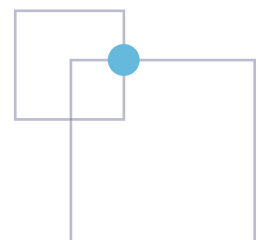
Both civilian and military clinical evidence underscores that early intervention, including Damage Control Resuscitation (DCR) procedures and rapid patient transport, significantly impacts patient outcomes, particularly in time-sensitive emergencies like trauma patient treatment.<sup>8</sup>

Timely DCR is a fundamental pillar of pre-hospital care for medical support, independent of different types of operations. Without it, morbidity and mortality rates increase. Military medical services must integrate timely DCR provision into their medical support plans.

## MOVES® SLC™: Meeting EU & NATO Requirements

MOVES® SLC™ is an answer and solution to these needs, as it provides the full spectrum of DCR as quickly as possible. MOVES® SLC™ combines four critical care capabilities in one device with a single user interface: patient monitoring with system alarms, oxygen-conserving ventilation, airway suction, and oxygen concentration.

Battery-powered MOVES® SLC™ is resource efficient, requiring neither power supply nor oxygen bottles. MOVES® SLC™ features a micro-integrated oxygen generation system and its turbine-driven ventilator delivers the exact amount of oxygen the ventilated patient requires, safely and efficiently eliminating the need for high-pressure, high-flow oxygen.



■ **MOVES® SLC™**: Advancing EU & NATO Battlefield and Pre-Hospital Emergency Medical Care Readiness with Proven Dual-Use Capabilities<sup>1</sup>

*“MOVES® SLC™ has become an essential tool for safe, reliable and flexible patient management in the field.”*

## Battle-proven: Ukraine’s LSCO Environment

More than 230 MOVES® SLC™ devices are deployed in Ukraine for use by civilian and military healthcare providers. Drawing on literature research, academic presentations and frontline feedback, the following excerpts reveal key insights and assessments from Ukrainian medical personnel regarding the use of MOVES® SLC™:

- “MOVES® SLC™ has become an essential tool for safe, reliable, and flexible patient management in the field. There is no need for frequent calibration.”<sup>9</sup>
- “MOVES® SLC™ can be quickly removed from danger zones without compromising patient care.”<sup>9</sup>
- “To ventilate patients without oxygen tanks enhances both mobility and safety.”<sup>9</sup>
- “UKR medical services are converting ambulances with MOVES® SLC™ into Medical Emergency Response Teams, instead of using dedicated MERT ambulances. With this system, you can provide damage control resuscitation very far forward.”<sup>9</sup>
- “MOVES® SLC™ is integrated within military-civilian evacuation and stabilization points and evacuation chains at multiple echelons of care.”<sup>10</sup>
- “MOVES® SLC™ is a device in a kind of a famous tubular Role 1, Role 2 setting.”<sup>11</sup>
- “Trial participants have reacted positively to using MOVES® SLC™ and the capabilities and improvements in care that the portable technology can provide for en route care of critically injured patients.”<sup>12</sup>

These reflections confirm the value of MOVES® SLC™ in austere and high-risk environments, under extreme pressure.

- **MOVES® SLC™:** Advancing EU & NATO Battlefield and Pre-Hospital Emergency Medical Care Readiness with Proven Dual-Use Capabilities<sup>1</sup>

## Dual-Use Capabilities: Military & Civilian Applications

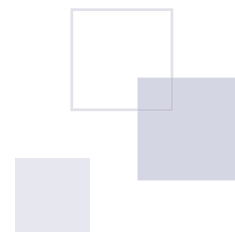
One of the greatest strengths of MOVES® SLC™ is its ability to serve both military and civilian missions, delivering advanced critical care wherever it is needed.

### Military Applications

- Proven in operational environments by Canadian Forces, Polish Special Forces, Israel Defense Forces, U.S. Army, U.S. Marines, U.S. Navy, SOCOM, and other allied forces.
- Supports far forward care, Damage Control Resuscitation (DCR), and Damage Control Surgery (DCS) during evacuation and in austere conditions.
- Enhances mobility, interoperability and interchangeability across NATO/EU platforms, ensuring continuity of care during complex missions.

### Civilian Applications

- **Remote Communities:** Ontario's Ornge incorporated capability to support long distance transport to and from remote communities where transport of large quantities of oxygen is not possible.<sup>13</sup>
- **Pandemic Response:** Selected by the Public Health Agency of Canada for ICU surge capacity during COVID-19.<sup>14</sup>
- **Humanitarian Relief Missions:** Utilized by NGOs for disaster relief, following the April 2025 earthquake in Thailand where it was deployed in 30 life-saving surgeries in challenging conditions.<sup>15</sup>
- **Post-Crisis Resilience:** Stockpiled by Canadian authorities to strengthen surge capacity and readiness for future emergencies.
- **Cross-training:** Incorporated into civilian hospital training programs to prepare both military and civilian medical teams, ensuring seamless collaboration in joint operations and emergency response.



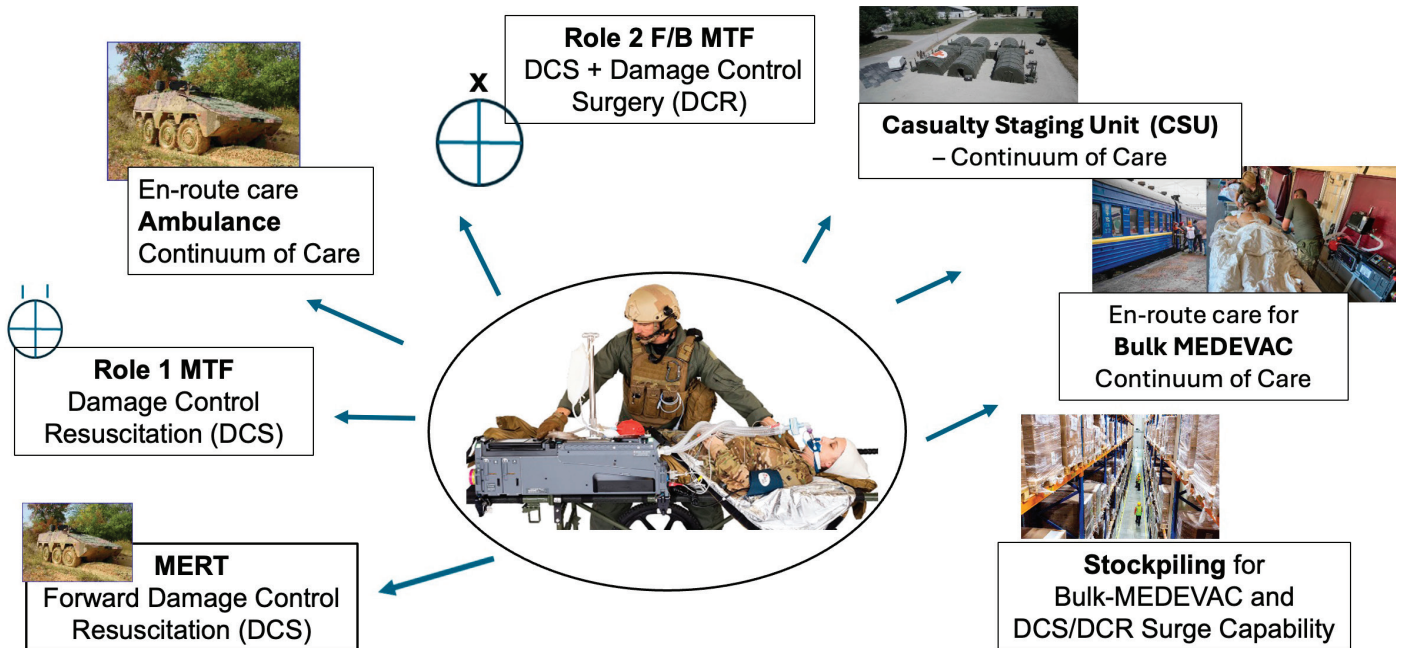
MOVES® SLC™: Advancing EU & NATO Battlefield and Pre-Hospital Emergency Medical Care Readiness with Proven Dual-Use Capabilities<sup>1</sup>

*Delivering unmatched flexibility across military and civilian missions.*

## Applications of MOVES® SLC™ for EU and NATO

MOVES® SLC™ is a multi-role, integrated critical-care system designed to support both forward medical operations, tactical and strategic evacuation, delivering unmatched flexibility across military and civilian missions.

### Portfolio of MOVES® SLC™



■ **MOVES® SLC™**: Advancing EU & NATO Battlefield and Pre-Hospital Emergency Medical Care Readiness with Proven Dual-Use Capabilities<sup>1</sup>

## Forward Medical Emergency Response

- Provides **advanced DCR** and pre-hospital emergency care at **Role 1 Medical Treatment Facilities (MTFs)**.
- Operates **independent of MEDEVAC platforms**, securely attaching to any NATO stretcher with stretcher holders for medical evacuation and rapid deployment.
- Enables **adaptable and scalable Role 1 to Role 2 capability**, supporting mission flexibility in austere environments.
- Provides Critical Care Transport Across the Continuum of Care.

## Role 2 Forward/Basic Medical Treatment Facility Support

- At **Role 2 F/B MTFs**, MOVES® SLC™ supports:
  - Admission DCR for stabilization.
  - Mechanical ventilation and anesthesia during DCS.
  - Post-operative critical care.

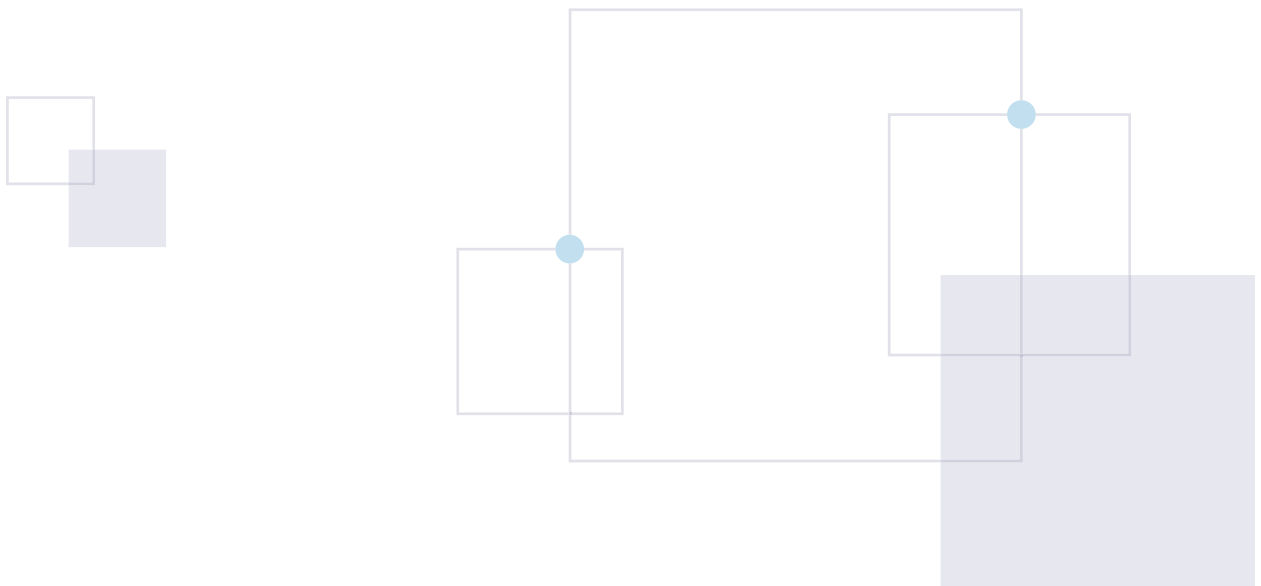
## Medical Evacuation and Critical-care Capabilities

- MOVES® SLC™ can be securely and firmly attached to every stretcher—including the **NATO stretcher**.
- Fully **platform-independent**: integrating into platforms with stretcher-holders including ambulances, buses, trains, ferries, ships, helicopters, and aircraft.
- Delivers **high-value critical-care transport capability** for MEDEVAC missions to support the continuum of care in a flexible way.
- Enables **bulk evacuation** for surge scenarios while maintaining continuous patient monitoring and treatment.
- Offers additionally nursing support in **Casualty Staging Units (CSU)**.

■ **MOVES® SLC™**: Advancing EU & NATO Battlefield and Pre-Hospital Emergency Medical Care Readiness with Proven Dual-Use Capabilities<sup>1</sup>

## Rapid Readiness and High Sustainability

- **Integrated Critical Care in One Unit**  
Combines ventilation, oxygen generation, vital-signs monitoring, and suction, eliminating the need for multiple devices and reducing setup time.
- **Continuous Monitoring of Essential Medical Parameters**  
Heart rate, blood pressure, SpO<sub>2</sub>, respiratory rate, body temperature, plus ECG and Masimo Rainbow SET® Pulse CO-Oximetry for non-invasive hemoglobin monitoring.
- **Improved Safety and Efficiency for Patients and Care Providers**  
Replaces four separate devices with one integrated system, reducing complexity and tripping hazards and improving patient access and security.
- **Rapid Deployment**  
Achieves full DCR capability within **3-7 minutes**, supporting life-saving interventions in time-sensitive scenarios.
- **Extended Operational Time**  
Provides 5-8 hours of oxygen with four batteries—critical for prolonged evacuation or denied-airspace scenarios.
- **Anesthesia Support**  
Compatible with intravenous and inhaled anesthesia via **MADM™ vaporizer integration**.



■ **MOVES® SLC™**: Advancing EU & NATO Battlefield and Pre-Hospital Emergency Medical Care Readiness with Proven Dual-Use Capabilities<sup>1</sup>

*Built-in oxygen  
concentrator  
eliminates the need  
for compressed gas  
cylinders... improving  
operational safety.*

## Logistics Advantages

- **Compact and Easily Deployable**

Weight: **21.3 kg**, Volume: **38,681 cm<sup>3</sup>** (L: 88.6 cm, W: 16.6 cm, H: 26.3 cm with Hydrocarbon Filter). Ideal for environments with limited space, such as ambulances, helicopters, and forward-operating bases.

- **Mobility and Platform Independence**

Securely attaches to **any NATO stretcher** and integrates seamlessly with MEDEVAC platforms, reducing reliance on specific vehicles.

- **Oxygen Independence**

Built-in oxygen concentrator eliminates the need for compressed gas cylinders, reducing hazardous goods transport and improving operational safety.

- **Service and Lifecycle Support**

Thornhill Medical offers comprehensive service options to maintain readiness and extend operational life, including full enablement of customer BMETs and full right to repair independently.

- **Stockpile**

Can be stockpiled, by civilian and military organizations, to ensure rapid mission readiness and resilience during crises, humanitarian operations, or multi-domain operations and/or LSCO.

## In Summary

MOVES® SLC™ stands out as a transformative solution for both EU and NATO medical readiness, directly addressing the evolving demands of modern defense and disaster response. Its integrated, platform-independent design enables critical care, including advanced Damage Control Resuscitation, mechanical ventilation, anesthesia, and continuous patient monitoring, in far forward scenarios, evacuation and prehospital emergency care.

MOVES® SLC™ is aligned with the NATO and EU doctrine and tactical requirements, strengthening collective defense by ensuring rapid, scalable, and resilient medical support across multi-domain and LSCO, including drone warfare. Its proven performance in Ukraine and adoption by allied forces demonstrate its reliability and adaptability in contested, resource-constrained environments.

In addition to its proven military use cases, MOVES® SLC™ also supports civilian missions, ranging from remote community healthcare and pandemic response to humanitarian relief and surge capacity. Its dual-use capability ensures that member states can respond effectively to crises, disasters, and mass casualty events, while also enhancing interoperability and tactical and operational flexibility.

In summary, MOVES® SLC™ delivers a validated, battle-proven dual-use solution that empowers EU and NATO nations to meet current and future medical challenges—extending lifesaving capabilities, operational reach, and resilience for both military and civilian stakeholders.

***MOVES® SLC™ delivers a validated, battle-proven dual-use solution that empowers EU and NATO nations to meet current and future medical challenges.***

- **MOVES® SLC™**: Advancing EU & NATO Battlefield and Pre-Hospital Emergency Medical Care Readiness with Proven Dual-Use Capabilities<sup>1</sup>

## References

1. Based on the presentation delivered by Brig Gen (ret.) Dr. Stefan Kowitz, Military Medicine Consultant for Thornhill Medical, at the International Conference on Disaster and Military Medicine (DiMiMed) 2025, Koblenz, Germany.
2. NATO 2022 – Strategic Concept, Preface Page 1.
3. White Paper for European Defence – Readiness 2030, EU Commission, page 6, 2025.
4. Military Medicine for the Battlefield; Future Challenges for Military Medical Services, Tim Hodgetts, Peter Iversen, FC-1 – FC-9, cpm Verlag 2025.
5. The Multinational Medical Coordination Centre – Europe (MMCC\_E) and New Realities in Security and Defence Policy, Rolf von Uslar, European Military Medical Service, 8-11, 2025.
6. Bi-Strategic Document: NATO MEDICAL SUPPORT CAPSTONE CONCEPT, 04 August 2022, approved by the Military Committee on 8 December 2022.
7. MC 0326/4, NATO Principles and Policies of Medical Support, dated 24 August 2018 and Comprehensive Health and Medical Concept for EU-led Crisis Management Missions and Operations, EEAS/EUMS, 30 April 2014.
8. AJP-4.10, ALLIED JOINT DOCTRINE FOR MEDICAL SUPPORT, Edition C Version 1, 11 September 2019.
9. Ukraine Feedback from the Frontline - July 2025; information shared with Thornhill Medical by the NGO partner which provided the MOVES® SLC™ donation to Ukraine.
10. John Quinn, EMT-P, MD, MPH, PhD; Prague Center for Global Health First, Faculty of Medicine, Charles University; Operational Medicine, 18 March 2025; Advancing Far Forward Casualty Care: MOVES® SLC™ and Innovations in Prehospital and Damage Control Resuscitation in Ukraine.

■ **MOVES® SLC™: Advancing EU & NATO Battlefield and Pre-Hospital Emergency Medical Care Readiness with Proven Dual-Use Capabilities<sup>1</sup>**

11. John Quinn, MD, PhD, MPH, EMT-P; Prague Center for Global Health First, Faculty of Medicine, Charles University; Advancing Far Forward Casualty Care: Innovations in Prehospital and Damage Control Resuscitation in Ukraine, AMSUS Webinar, 10 September 2025.

12. The Emergence of MOVES® SLC™ Life-Support System Equipment for En-Route Trauma Care in Ukraine During a Qualitative Assessment; Lynn Lieberman Lawry, MD, MSPH, MSc, Jessica Korona- Bailey, MPH, Tiffany E Hamm, PhD, John Maddox, MD, MC, USN, Luke Juman, MPH, Miranda Janvrin, MPH, John B Holcomb, MD (Ret.), Oleh Berezyuk, MD, Tracey Perez Koehlmoos, PhD, MHA; Published: 21 September 2024, Military Medicine, Volume 190, Issue 3-4, March/April 2025, p.e491-e497.

13. <https://thornhillmedical.com/orng-connecting-ontario-communities-with-critical-care/>

14. <https://thornhillmedical.com/thornhill-medical-joins-canadian-response-to-covid-19-canadian-medical-innovator-to-ramp-up-production-of-ground-breaking-life-saving-mobile-ventilator-system-for-fast-safe-deployment/>

15. As reported by NGO to Thornhill Medical.

