

MADMTM

ANESTHESIA DELIVERY MODULE

Quick Start Guide

THORNHILL
MEDICAL



1. Fill the MADM™ ISO or SEVO canister with the appropriate liquid anesthetic.

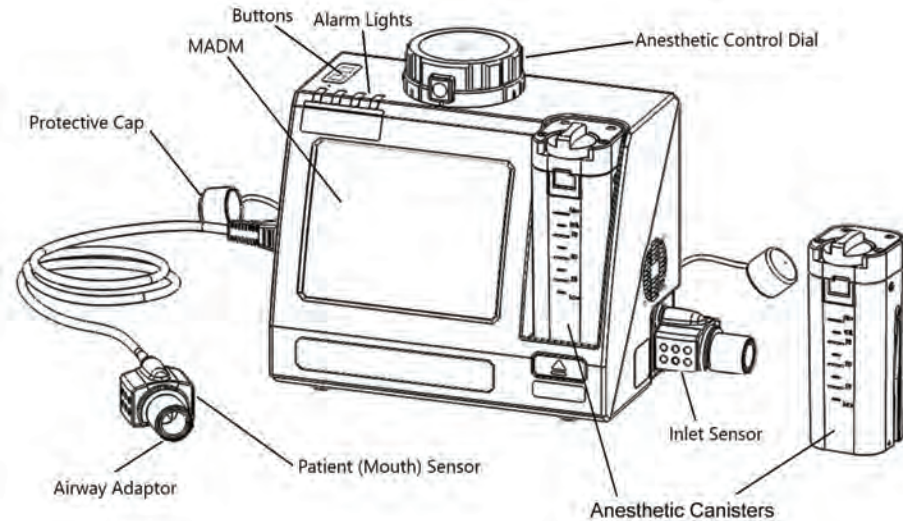


2. Place MADM™ on a level surface or attach the clamp and orient it in an upright position.

3. Insert the anesthetic canister into MADM™.

4. Connect the patient mouth anesthetic sensor to MADM™. Ensure an airway adaptor is installed in the sensor.

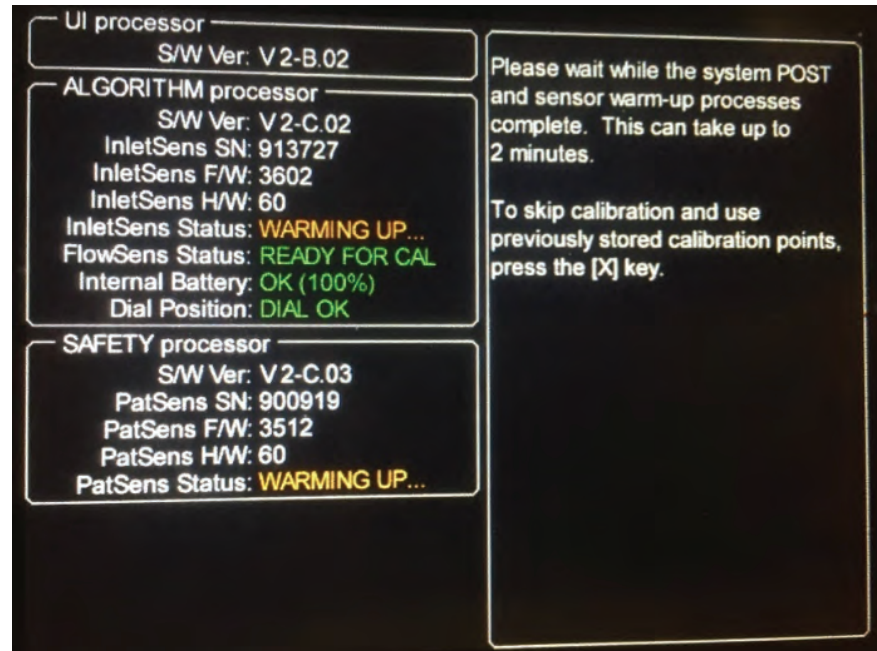
5. Ensure that the inlet anesthetic sensor is fully inserted into MADM™.



6. Connect external power and turn MADM™ on by pressing the power button (on the REAR panel) to the on position.

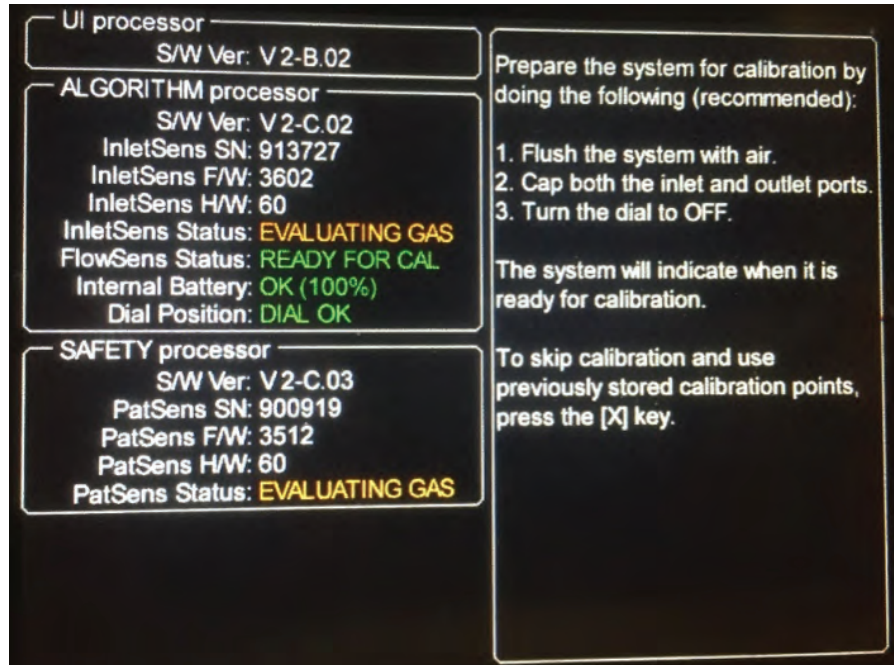


7. Allow the MADM™ inlet and patient anesthetic gas sensors warm up.

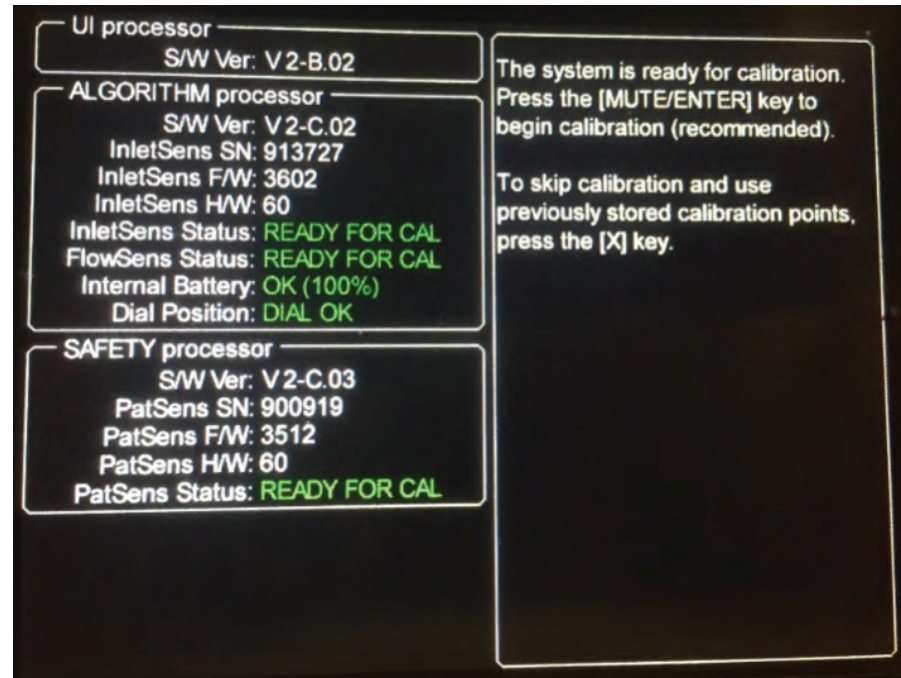


8. Prepare MADM™ for the pre-use Self-Check by following the onscreen instructions.

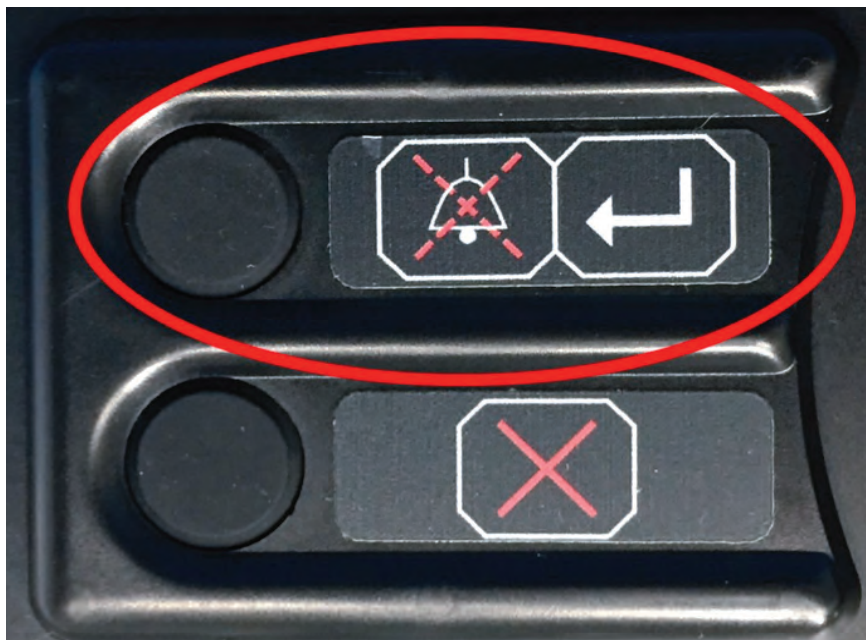
NOTE: If the “EVALUATING GAS” onscreen message persists for either anesthetic gas sensor, flush that sensor with fresh gas (preferably air).



9. MADM™ will indicate when ready to complete the pre-use Self-Check.

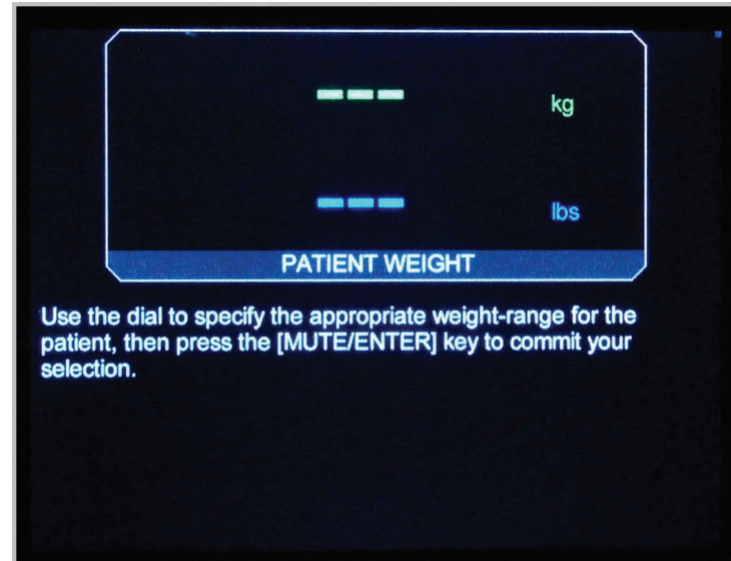


10. Initiate the MADM™ pre-use Self-Check by pressing the [MUTE/ENTER] button (on the TOP panel).



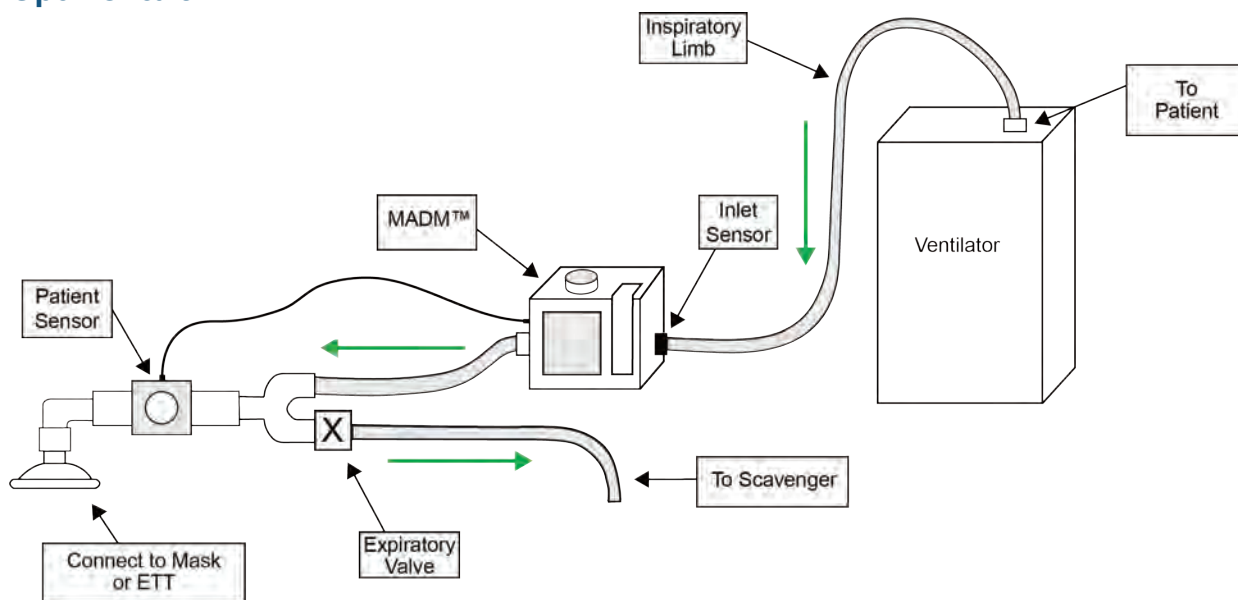
11. If the pre-use Self-Check is OK, MADM™ will proceed to the Weight Entry screen. Follow the onscreen instructions to specify and confirm the appropriate weight-range for the patient. The anesthetic dial will be used to select the weight-range and the [MUTE/ENTER] button to confirm the selection. The dial must be returned to the OFF position to continue.

NOTE: If the pre-use Self-Check fails, or the incorrect patient weight-range is confirmed, MADM™ must be powered off and this process must be restarted.

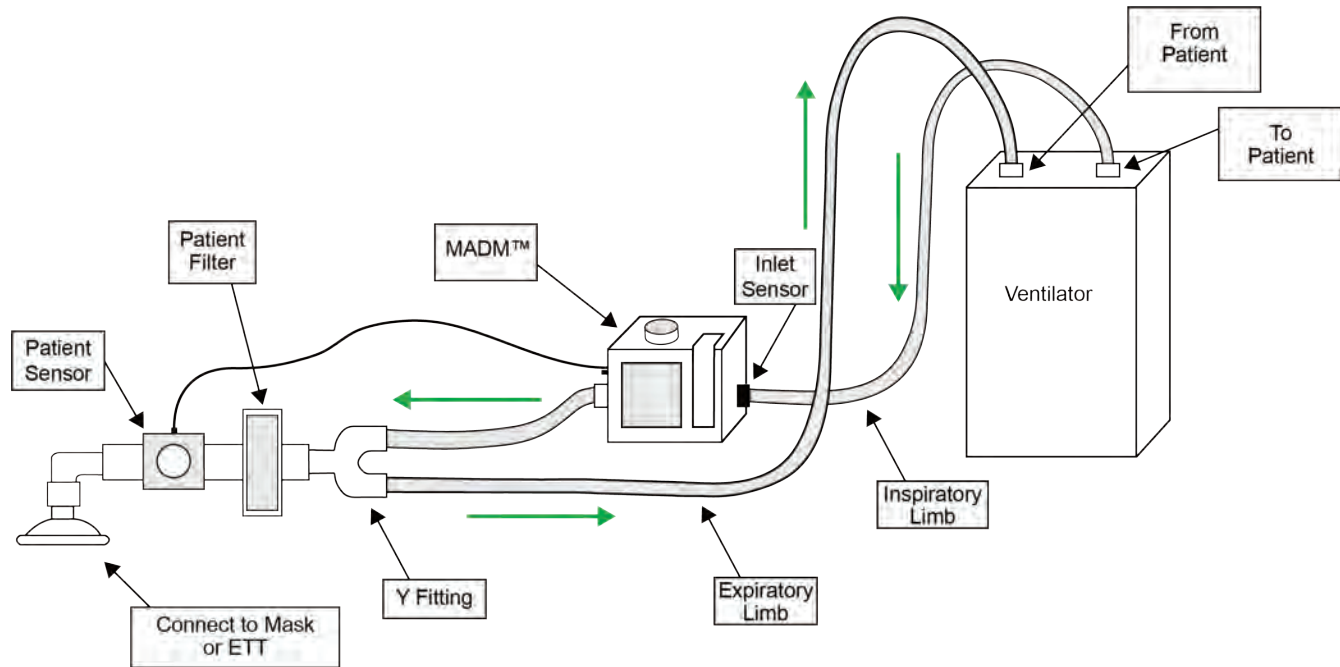


12. Connect MADM™ to the open or closed-circuit ventilator. Use the supplied 36" patient tubing to connect the ventilator outlet to the MADM™ inlet sensor.

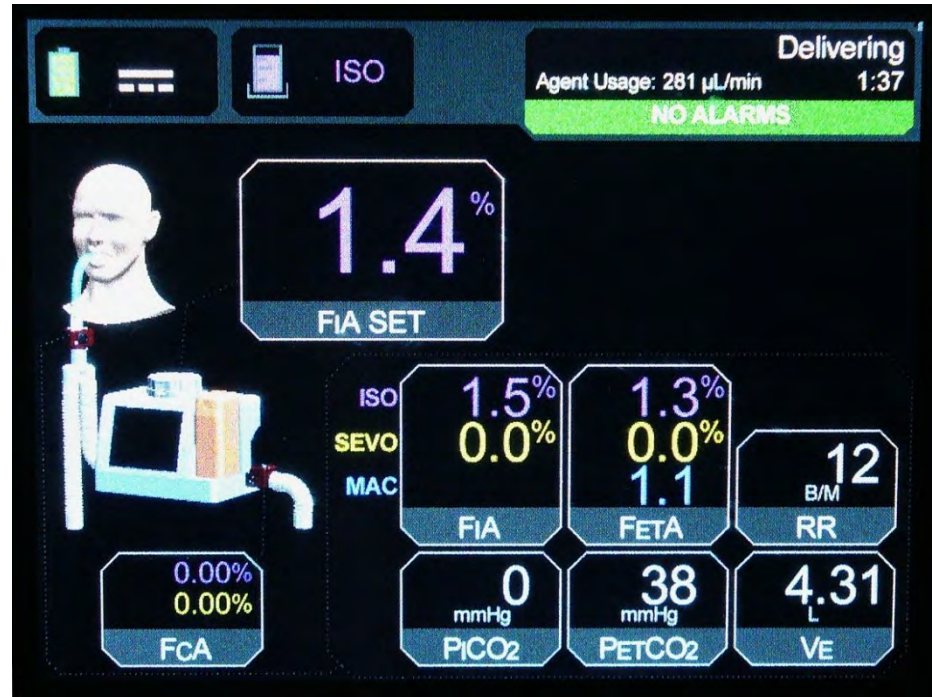
Open-Circuit



Closed-Circuit



13. Start ventilating the patient and set the desired anesthetic concentration (FIA SET) using the MADM™ anesthetic control dial.



MADM™ Anesthesia Delivery Module Quick Start Guide

This guide contains abstracted information from the MADM™ Operator's Manual (P/N 124764). Please refer to the latest revision for complete information on the MADM™.

Thornhill Research Inc. reserves the right to make changes in specifications at any time without notice or obligation and will not be liable for any consequences resulting from the use of this publication.

© 2019 Thornhill Research Inc. All rights reserved. MADM™ is a trademark of Thornhill Research Inc.



Web: www.thornhillmedical.com
Email: info@thornhillresearch.com
Telephone: 1-888-597-1325 (Toll-Free)